

Sustainable Life

Birmingham



Awarded in May 2019 for the Stirchley Secret Garden Project

Project Closed 18/06/20

Final Report





Introduction

The PLT funding was awarded in May 2019 for the Stirchley Secret Garden project.

This money was due to provide regular volunteering sessions in the garden with the aim of completely restoring it to a safe and workable garden for community use.

The garden closed in March 2020 due to new ownership coupled with the destruction of the main entrance wall rendering the entrance too dangerous for the public and with the landlord showing no plans to restore it.

Unable to work further on the SSG and with the new pandemic crisis before us, the Postcode Local Trust allowed the reallocation of funding to be redirected to the Covid-19 pandemic.

The first half of this project is therefore for the SSG and the final half is for COVID-19 community work.



Stirchley Secret Garden (SSG)

The SSG was originally funded by the Heart of England Community Foundation BBCC fund. It then received further funding from the Postcode Local Trust and finally Love Brum. It ran successfully for 1 year and 3 months and saw the transformation from derelict rubbish pile over a foot deep, to a working garden producing flowers, tomatoes and pumpkins.



Entrance to Garden Before...

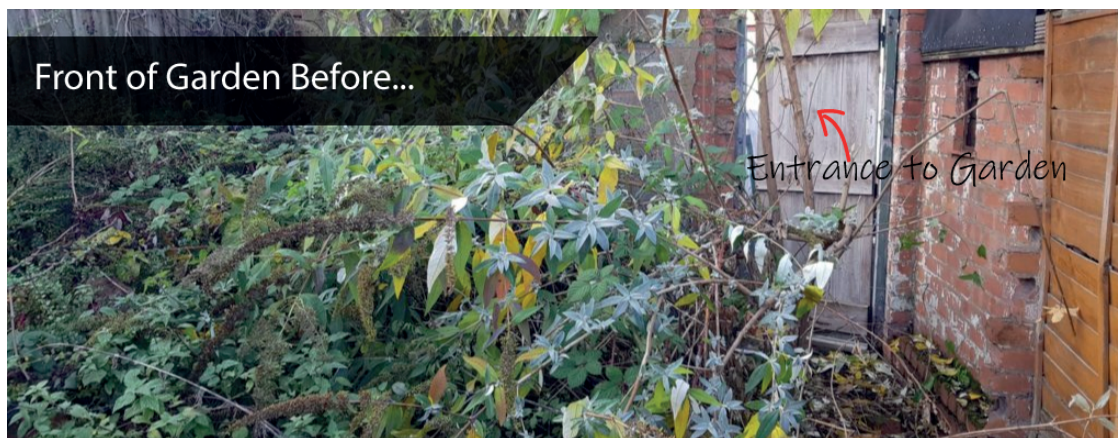


Sustainable Life
Birmingham

Entrance to Garden After...



Front of Garden Before...



Sustainable Life
Birmingham

Front of Garden Current Progress...

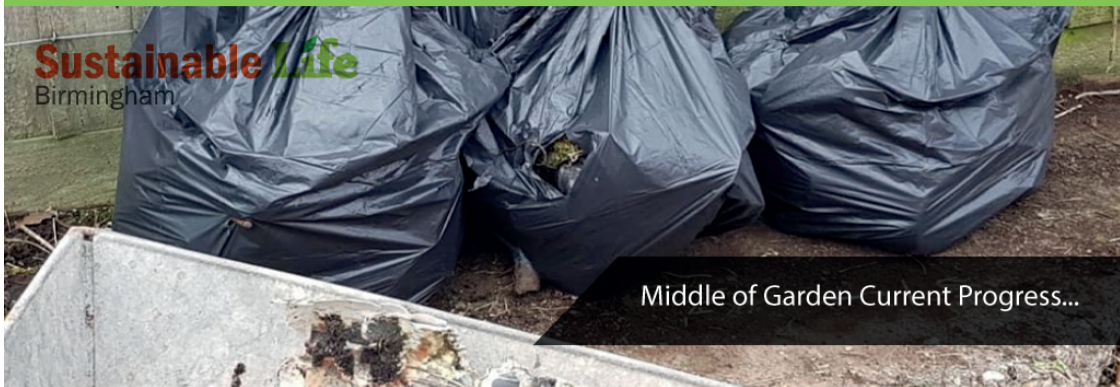


Middle of Garden Before...



Sustainable Life
Birmingham

Middle of Garden Current Progress...



BEFORE...



AFTER...



What did the Postcode Local Trust fund?

The Postcode Local Trust funded 26 weekly volunteering sessions at the Stirchley Secret Garden as well as a second skip to help remove the bulk of the rubbish and waste that had been dumped into the garden when it was left derelict. This created a safe garden space for the community to use where before it was a rat infested rubbish pile over 2 feet deep in places.









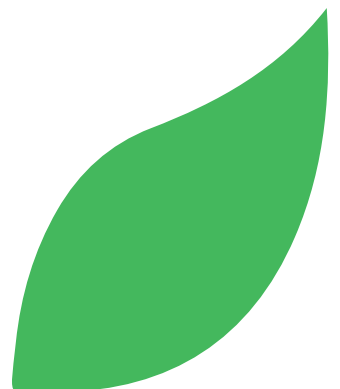
Covid-19 Community Work

The leftover Postcode Local Trust money funded our Masks and adapters project for the Birmingham Jewish Community Care group via the Andrew Cohen Care Home in Stirchley.

Working in partnership with A is for Alice costumes, we managed to obtain 160 Masks using PLT funding to provide all 80 care workers in the group with 2 masks each. These masks are completely washable at the required 60 degree wash (with soap), to make them reusable and safe and come with an extra insert pocket for an extra tissue layer to improve long term use and reduce moisture build up.

Our volunteers also make 160 crochet ear savers to accompany the masks to protect ears from long term mask use and rubbing.

The BJCC group have washing facilities on site and were previously using an excess of 200 masks PER DAY which then had to be thrown after use. They were suffering shortages of masks as supply could not keep up with demand so this was an ideal solution.





We are proud to have supported a local micro-business owner with this project as an added bonus!



We are also proud to have supported a local care home and connected homes across Birmingham helping to protect care workers and residents during this crisis.









Thank you!